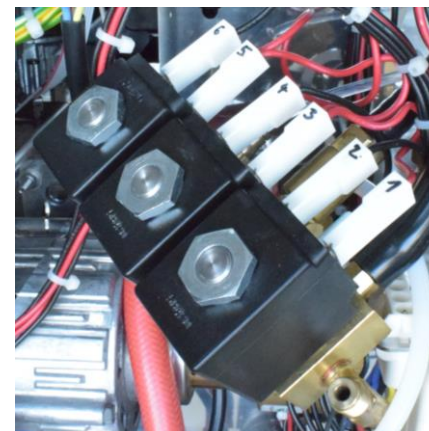


## Plastic valve block (C-Chassis)

### Preparation

Number the connectors on the brass valve block prior you remove them with a water resistant pen (see picture).



### Electrical connections

- ①② Instant Valve
- ③④ Hot Water Valve
- ⑤⑥ Coffee Valve

### Water connections

- ⓐ Water connection 6mm
- ⓑ Manometer connection 4mm
- ⓒ Coffee
- ⓓ Hot water
- ⓔ Instant water

